



NEN

Normalisatie spoorwegen

Arthur Carlebur

9 december 2011

Normalisatie spoorwegen

Soorten normen

Te onderscheiden zijn:

- Normen voor **producten**
(Europees, nationaal)
- Normen voor **processen/procedures**
- Overige publicaties
 - Praktijkrichtlijnen
 - Technische afspraken
 - Guidance documents e.d.

Soorten verwijzing

- Afspraak tussen partijen (leveringsvoorwaarden)
- Bindend voorschrift
- Wet verwijst naar een norm "of gelijkwaardig"
(vooral bouw- en milieuwetgeving)
- Voorwaarde voor beschikking (bouw, fiscaal)
- Algemene verwijzing (aanbestedingen)
- Vermoeden van overeenstemming (CE)



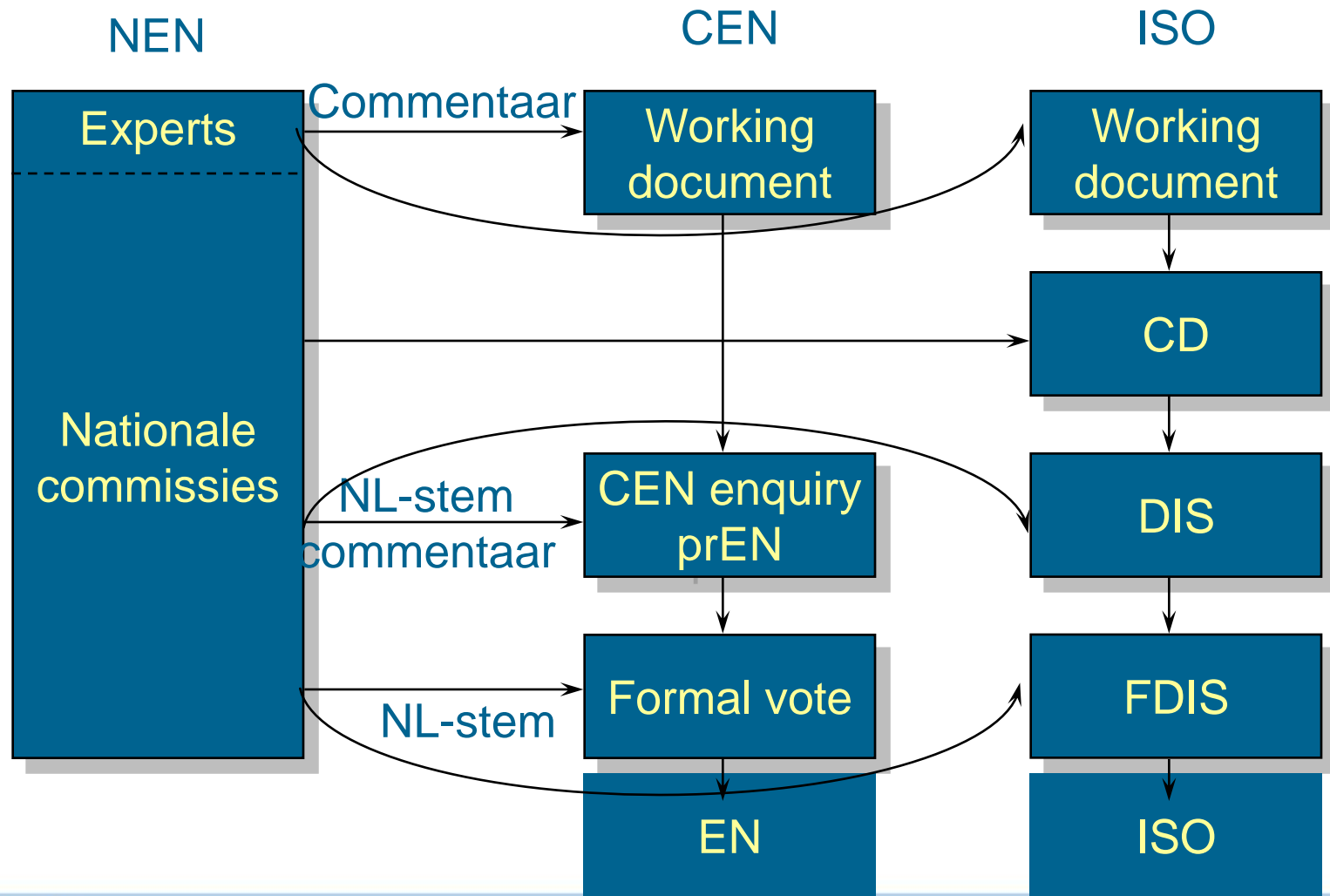
CE-markering en de "Nieuwe Aanpak"

Kernpunten van de 'Nieuwe aanpak' zijn

- essentiële eisen in wetgeving
- technische uitwerking in normen
- verwijzing in EG-Publicatieblad: vermoeden van overeenstemming
- mandaten Europese Commissie aan CEN/CLC
- zo mogelijk samenwerking met ISO/IEC



Standaard normproces



Fases normproces

| Fase | Document |
|-----------------------|----------------------------------------------------|
| 1. Voorstelfase | Voorstel nieuw werk (NWI proposal) |
| 2. Voorbereidingsfase | Working draft(s) (WD) |
| 3. Int Commissiefase | 1e ontwerp (ISO, IEC/CD) |
| 4. Onderzoeksfase | 2e ontw. (ISO/DIS, IEC/CDV) 1e ontw. (prEN-CEN) |
| 5. Goedkeuringsfase | 'drukproef' (ISO/FDIS, IEC/FDIS) (prEN-FV) |
| 6. Publicatiefase | ISO, IEC, NEN-EN |

Normproces Initiatief

- Individu of bedrijf
- Consultant /normalisatieadviseur
- Overheid
- NEN, CEN, ISO
- Markt (twee of meer brancheverenigingen)
- Branchevereniging

Normalisatie Europa

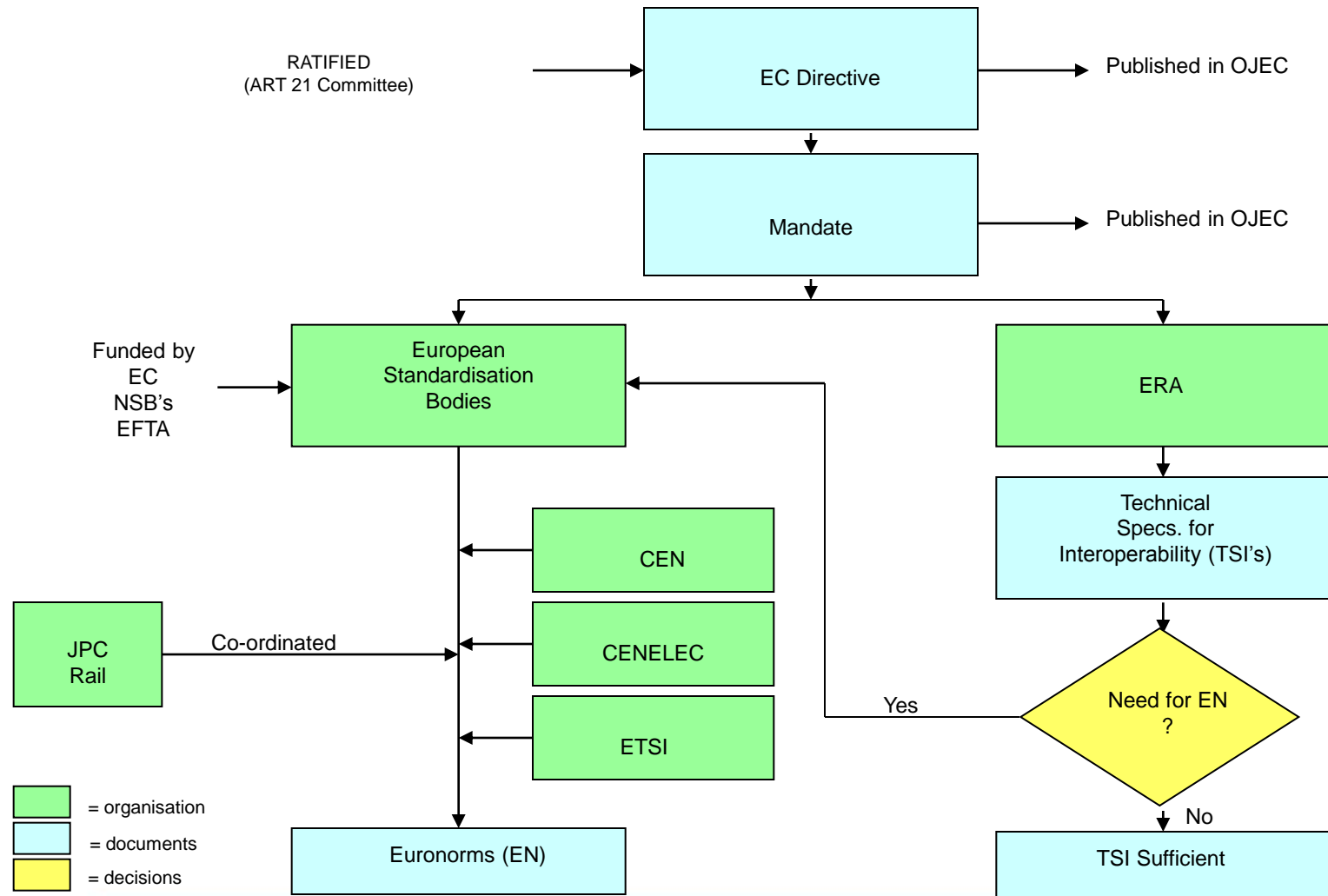
Uitvoering binnen CEN, CENELEC, ETSI

- Technische Commissie
- Eventueel Subcommissies
- Werkgroepen

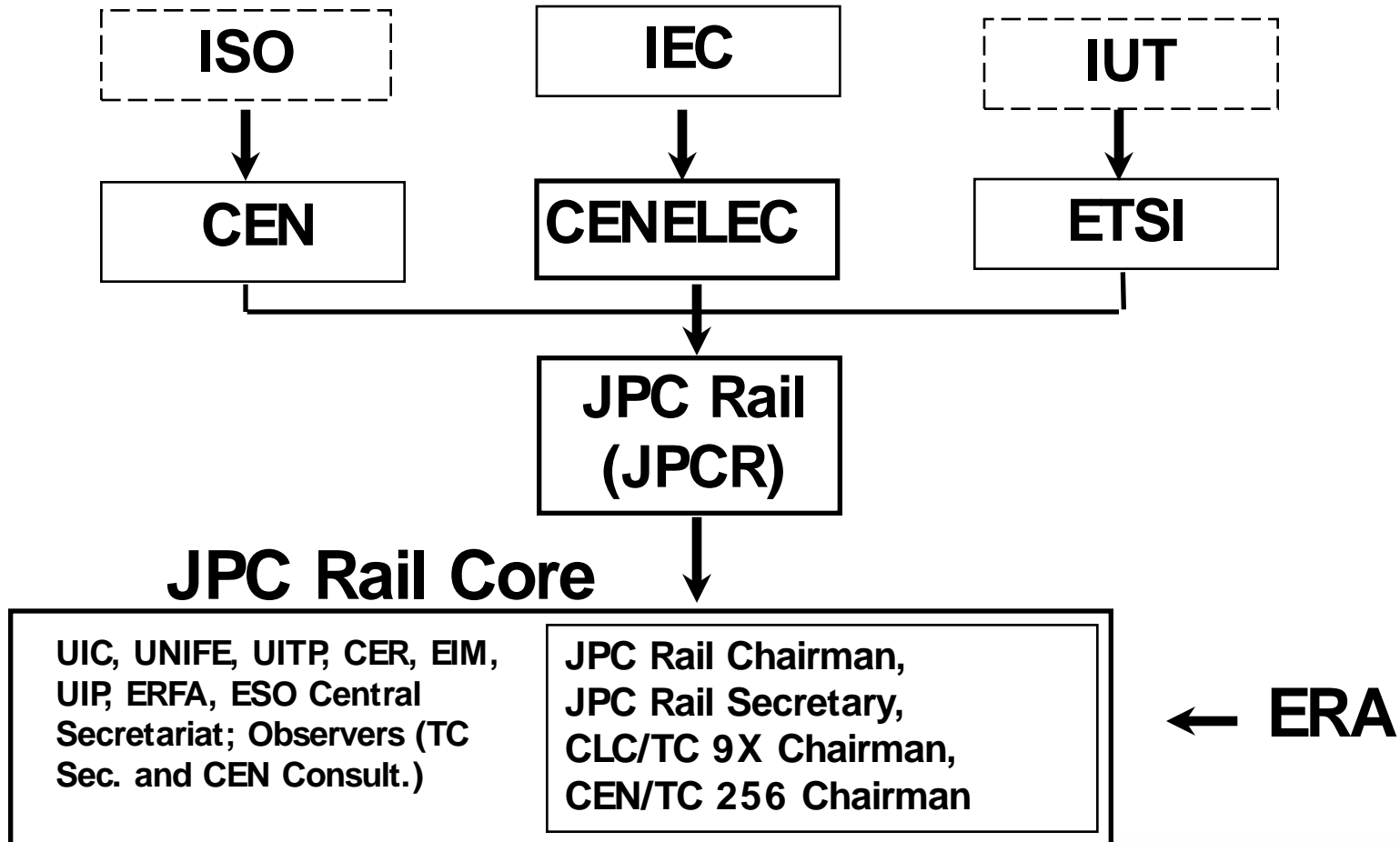
Richtlijnen - spoorwegen

- Richtlijn met betrekking tot openbare aanbesteding 93/38/EG (2004/18/EG)
- Richtlijn met betrekking tot interoperabiliteit 2008/57/EG
- Richtlijn met betrekking tot machineveiligheid 2006/42/EG

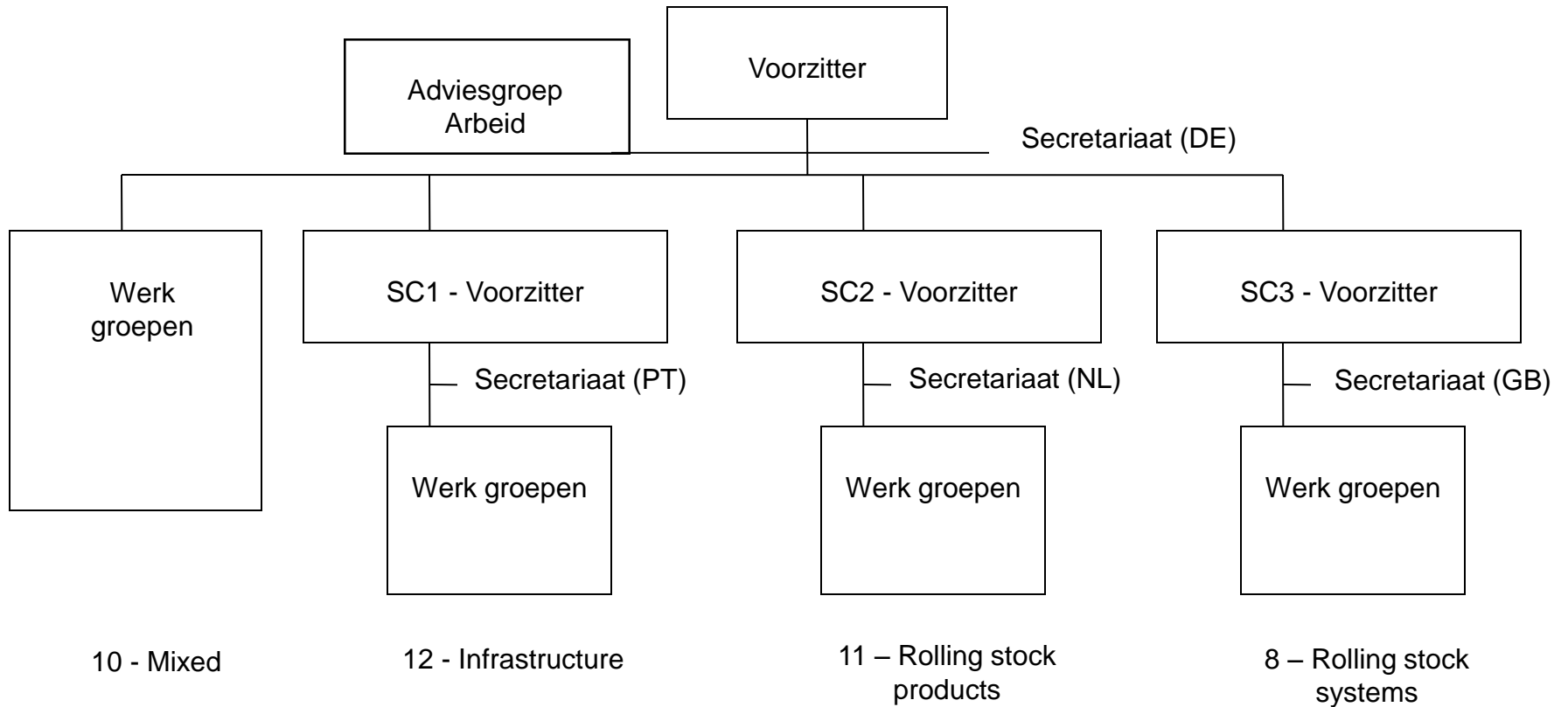
Normontwikkeling in kader van 2008/57/EG



JPC Rail



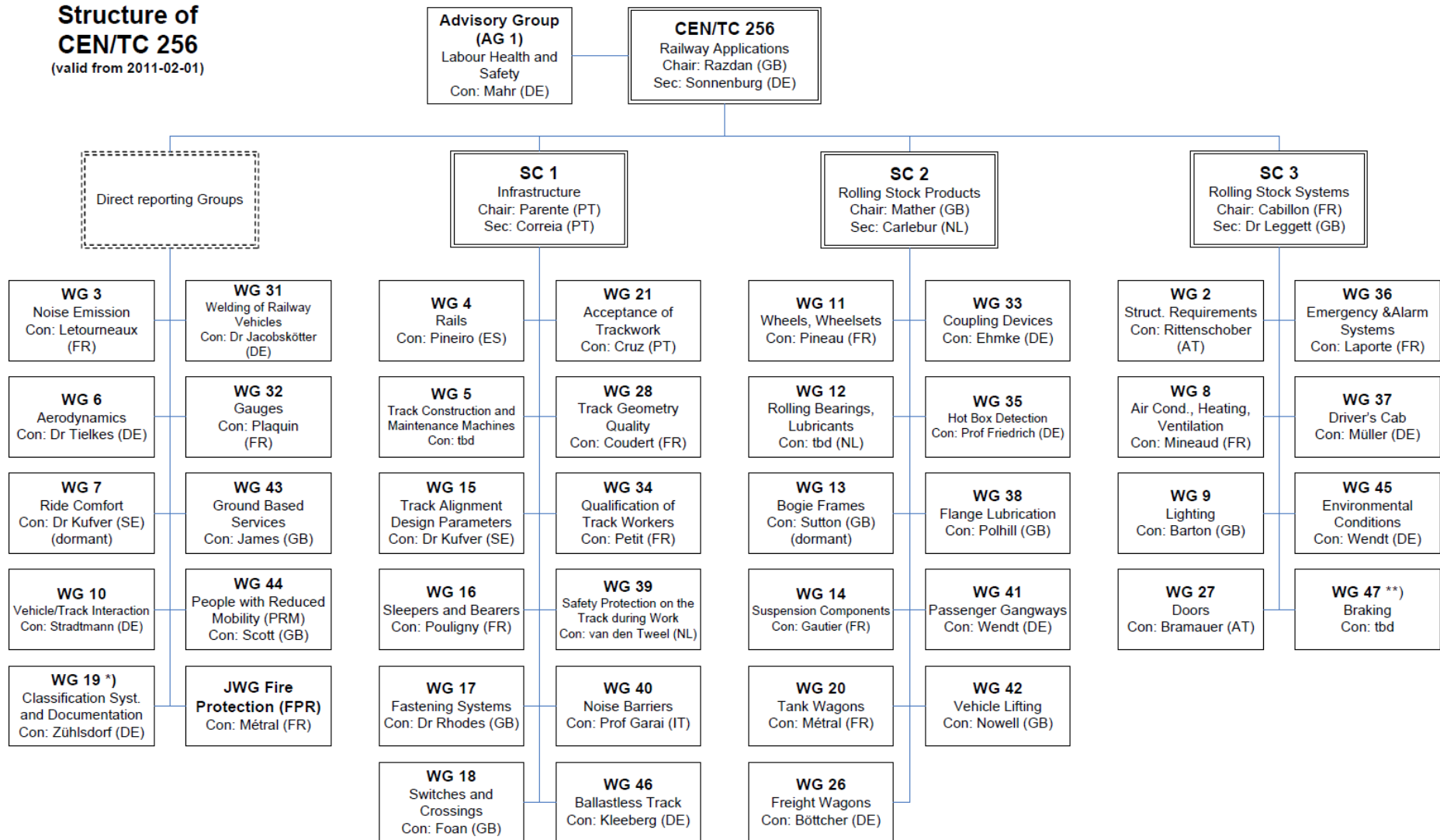
Structuur CEN/TC 256



Totaal = 41 Werkgroepen plus advies groep

Structuur CEN/TC 256

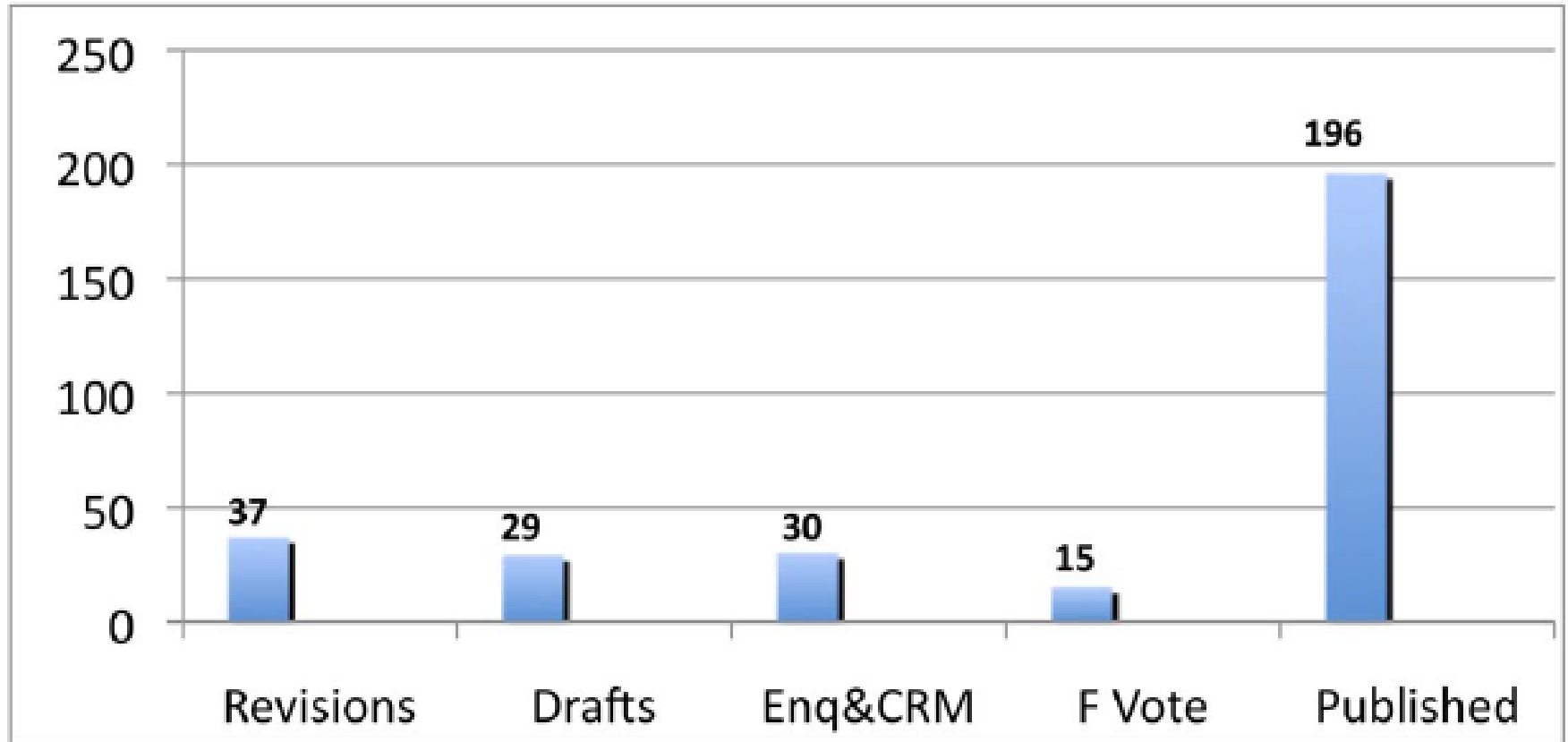
Structure of CEN/TC 256 (valid from 2011-02-01)



Technische expertise

- Noodzaak project aangegeven door Mandaat/TSI
- Indien nieuwe WG nodig is, besluit dmv Resolutie in TC 256
- Na acceptatie, wordt oproep voor experts and WG Convenors verspreid via Nationale instituten (NSB)
- NSB's nomineren experts en eventueel WG Convenors bij TC 256
- Indien meer kandidaten voor WG Convenors beschikbaar zijn volgt onderhandeling en eventueel een stemming
- Benoemde Convenor leidt a.d.h.v. CEN-regels normontwikkeling

Werkprogramma CEN/TC 256

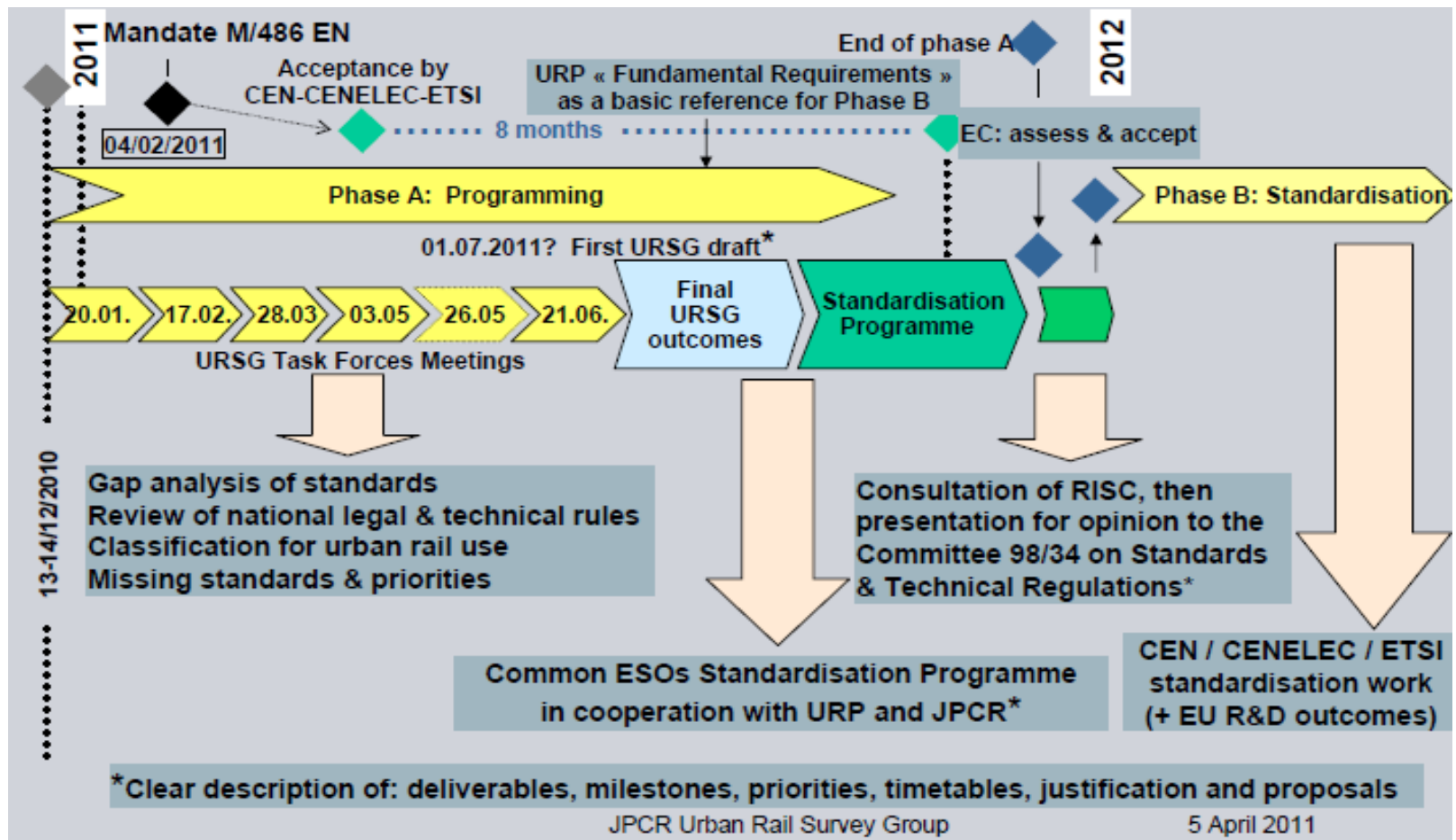


Scope Mandate 486 Urban Rail

Perform a gap analysis of CEN, CENELEC and ETSI standards, as well as ISO and IEC standards already existing and under development, including the assessment of their revision. On the basis of this analysis, developed with the support of qualified urban rail experts and complemented if possible by relevant documents coming from existing national legal technical rules across Europe, the European standardisation bodies will formulate the terms of reference for developing a coherent minimum set of standards for voluntary use in the field of urban rail.

The programme should give a clear description of the work to be done, which is necessary to meet the scope of this mandate, with indication of deliverables, milestones, priorities, timetables, justifications and, where appropriate, proposals for its execution in phases which should include the relevant timetables.

Urban Rail Survey Group



URSG Organisatie

| Infra subsyst | | | | Rolling Stock | | System Level | |
|------------------------------|------------------------------|---------------------------------|---------------------------|---------------------------------------------|-------------------------------|--------------------------------------------------|---------------------------------------|
| Guideway and stations | Traction Power Supply | Signalling, TCS, Oper CS | Telecommunications | RS mechanical products & systems | RS electrical products | Systems and Procedures (incl. Acceptance) | Operations (incl. maintenance) |
| TC 256 SC 1 | | | | TC 256 SC 2 and SC 3 | | TC 256 | |
| | TC 9X SC C | TC 9X SC A | | | TC 9X SC B | TC 9X | |
| | | | ETSI | | | | |

NEN

URSG rapport

1) Introductie

2) 3 Lijsten:

- EN's niet geschikt voor Urban Rail
- EN's direct toepasbaar voor Urban Rail
- EN's die moeten worden aangepast en nieuwe EN's

3) Specificatie normbehoefte

Areas of application: Acoustics

Existing WG Number WG 3

Priority: Low

prEN ISO 3095 - Measurement of noise emitted by railbound vehicles

The scope would cover the definition of some new scenarios to measure, in order to take into account indications of the influence of smaller horizontal curves, speed, ballast, different open field conditions and track quality.

The future works should also consider the outcomes of the ERA WP on NOISE TSI revision.

EN ISO 3381 - Measurement of noise inside railbound vehicles

The methods for measurement of noise levels inside the vehicle should take into account the influence of smaller horizontal curves, speed, ballast, different open field conditions and track quality.

The future works should also consider the outcomes of the ERA WP on NOISE TSI revision.

Areas of application: Wheels /Wheelsets

Existing WG Number WG 11

Priority: Middle to High

EN 13103 Non Powered axles - Design method

EN 13104 Powered axles – Design Method

The scope should include axles with internally mounted axle boxes.

The scope should include vehicles/bogies with independent wheels (e.g. Low floor trams).

The standard should refer to EN 15663 for definitions.

Acceleration with all kinds of loads should be considered.

EN 13260 Wheelsets - Product requirements

include axles with internally mounted axle boxes

include wheels for urban applications, especially resilient wheels

EN 13261 Axles- Product requirements

include axles with internally mounted axle boxes

EN 13262 Wheels - Product requirements

include wheels for urban applications, especially resilient wheels

Areas of application: Driver's CAb

Existing WG Number WG 37

Priority: Low

prEN 16186-1 Driver's cab for urban rail vehicles- Visibility, layout, access

This standard shall define:

- anthropometric measurements of the driver
- general design rules for layout and access to the cab
- general design rules for the positioning of the main controls on the driver's desk
- forward viewing, rear and side conditions including compatibility with highway legislation for tramways

Areas of application: Vehicle/Bogie

Existing WG Number: No

Priority: High

New standard:

Underrun protector for tramways

The aim of the standard is to describe a device which prevents that pedestrians are overrun by a tramway.

Definition of minimum requirements for underrun protectors:

- types
- functionality
- different locations
- clearances
- dimensioning
- choice of material

Areas of application: Bonding

Existing WG Number: No

Priority: Low

New standard:

Bonding for railway applications

This standard shall define the requirements for the bonding process with regard to railway specifics.

It shall cover the whole process:

- quality assurance
- engineering
- application rules
- testing
- materials
- methods

Vragen?